



Government of India
Ministry of Earth Sciences



India Meteorological Department

PRESS RELEASE-9

Time of issue: 1630 hours IST

Dated: 2nd September, 2024

Sub: (a) Depression (Remnant of Cyclonic Storm “ASNA”) weakened into a Well Marked Low Pressure Area over northwest Arabian Sea and (b) Depression over East Vidarbha and adjoining Telangana

(a) Depression (Remnant of Cyclonic Storm “ASNA”) weakened into a Well Marked Low Pressure area over northwest Arabian Sea

Yesterday’s Cyclonic Storm “ASNA” (pronounced as As-Na) over northwest Arabian Sea moved south-southwestwards, and weakened into a well marked low pressure area over the same region at 1130 hours IST of today, the 02nd September, 2024.

It is likely to continue to move further south-southwestwards and weaken gradually into a low pressure area over northwest Arabian Sea during next 12 hours.

This is the last update in association with the well marked low pressure area (remnant cyclonic Storm ASNA) over northwest Arabian Sea.

(b) Depression over East Vidarbha and adjoining Telangana

Yesterday’s depression over South Odisha and adjoining South Chhattisgarh & north Andhra Pradesh moved across Chhattisgarh and lay centered at 1130 hours IST of 02nd September, 2024 lay over East Vidarbha and adjoining Telangana near latitude 19.8°N and longitude 79.5°E, about 30 km southeast of Chandrapur (Maharashtra), 100 km south south-west of Bramhapuri (Maharashtra), 120 km north of Ramagundam (Telangana), and 140 km southeast of Wardha (Maharashtra).

It is likely to move nearly west-northwestwards across Vidarbha and weaken into a well marked low pressure area during next 12 hours.

Warnings:

(i) Rainfall Warning:

Gujarat region: Light to moderate rainfall at most places with very heavy to extremely heavy rainfall at isolated places on 2st and 3rd September.

Madhya Maharashtra: Light to moderate rainfall at most places with very heavy to extremely heavy rainfall at isolated places on 2nd September and isolated heavy rainfall on 3rd September.

Contact: Cyclone Warning Division, Office of the Director General of Meteorology, India Meteorological Department, Ministry of Earth Sciences, E-mail: cyclonewarningdivision@gmail.com, Website: rsmcnewdelhi.imd.gov.in, Spatial rainfall distribution: Isolated: <25%, A few: 26-50%, Many: 51-75%, Most: 76-100%, Rainfall amount (mm): Heavy rain: 64.5 – 115.5, Very heavy rain: 115.6 – 204.4, Extremely heavy rain: 204.5 or more.

Marathwada: Light to moderate rainfall at most places with heavy to very heavy rainfall at isolated places on 2nd September.

Vidarbha: Light to moderate rainfall at most places with isolated heavy to very heavy rainfall at a few places on 2nd September and isolated heavy rainfall on 3rd September.

East Madhya Pradesh: Light to moderate rainfall at most places with heavy rainfall at isolated places is likely on 2nd September.

West Madhya Pradesh: Light to moderate rainfall at most places with heavy to very heavy rainfall at isolated places on 2nd and 3rd September.

East Rajasthan: Light to moderate rainfall at most places with heavy rainfall at isolated places on 2nd September.

Telangana: Light to moderate rainfall at most places with isolated heavy rainfall over north Telangana on 2nd September.

Saurashtra & Kachchh: Light to moderate rainfall at most places with heavy rainfall at isolated places on 2st and very heavy rainfall on 3rd September.

(ii) Wind warning:

- Squally weather with wind speed reaching 35-45 kmph gusting to 55 kmph is likely over Vidarbha adjoining Telangana & Marathwada and during next 12 hours.

(v) Flash Flood Guidance:

❖ **24 hours Outlook for the Flash Flood Risk (FFR) till 0530 IST of 03-09-2024 :**

Low to Moderate flash flood risk likely over few watersheds & neighbourhoods of following Met Sub-divisions during next 24 hours.

Telangana - Nirmal, Nizamabad, Jagital, Peddapalle, Mancherial, Kamreddy, Sangareddy, Medak, Adilabad and Kumarabheen Asifabad districts.

Vidarbha – Nagpur, Akola, Wardha, Washim, Buldhana, Amravari, Chandrapur and Yavatmal districts.

Marathawada – Parbhani, Hingoli, Osmanabad, Latur, Bid and Nanded districts.

Gujarat Region – Valsad, Tapi, Dahod, Mahisagar, Aravalli, Sagarkantha, Navsari, Surat, Narmada, Bharuch, Vadodra & Panchmahal districts.

West Madhya Pradesh – Jhabua, Alirajpur, Barwani, Mandsaur, Khargone, Dhar, Indore, Ratlam, Ujjain, Khandwa, Dewas, Sehore, Shajapur & Agar Malwa districts.

❖ **Impact Expected (Vidarbha, Telangana, Marathwada, Madhya Maharashtra, Madhya Pradesh, Gujarat state and East Rajasthan)**

- Localized Flooding of roads, water logging in low lying areas and closure of underpasses mainly in urban areas of the above region.
- Breaking of tree branches.
- Occasional reduction in visibility due to heavy rainfall.
- Reduction of visibility over sea area due to sea spray induced by strong wind and heavy rainfall.

Contact: Cyclone Warning Division, Office of the Director General of Meteorology, India Meteorological Department, Ministry of Earth Sciences, E-mail: cyclonewarningdivision@gmail.com, Website: rsmcnewdelhi.imd.gov.in, Spatial rainfall distribution: Isolated: <25%, A few: 26-50%, Many: 51-75%, Most: 76-100%, Rainfall amount (mm): Heavy rain: 64.5 – 115.5, Very heavy rain: 115.6 – 204.4, Extremely heavy rain: 204.5 or more.

- Disruption of traffic in major cities due to water logging in roads leading to increased travel time.
- Minor damage to kutcha roads.
- Possibilities of damage to vulnerable structure.
- Localized Landslides/Mudslides/landslips/mud slips/land sinks/mud sinks.
- Damage to horticulture and standing crops in some areas due to inundation.
- It may lead to riverine flooding in some river catchments (for riverine flooding please visit Web page of CWC)

❖ **Action Suggested**

- Judicious regulation of offshore/onshore Operations
- Judicious regulation of surface transports including railways and roadways.
- Check for traffic congestion on your route before leaving for your destination.
- Follow any traffic advisories that are issued in this regard.
- Avoid going to areas that face the water logging problems often.
- Avoid staying in vulnerable structure.

❖ **Agromet Advisories for Heavy Rainfall likely over Vidarbha, Telangana, Marathwada, Madhya Maharashtra, Madhya Pradesh, Gujarat state and East Rajasthan) due to Depression**

- Make provision for draining out excess water from crop fields to avoid water stagnation.
- Provide mechanical support to horticultural crops and staking to vegetables.

Significant amount of rainfall recorded from 0830 hours IST of yesterday, 1st September to 0830 hours IST of today, the 02nd September, 2024) is given in Annexure-I.

All associated graphics have been kept in Annexure-1. The 24 hours accumulated realised rainfall (≥ 7 cm) ending at 0830 hours IST of 2nd August is kept in Annexure-2.

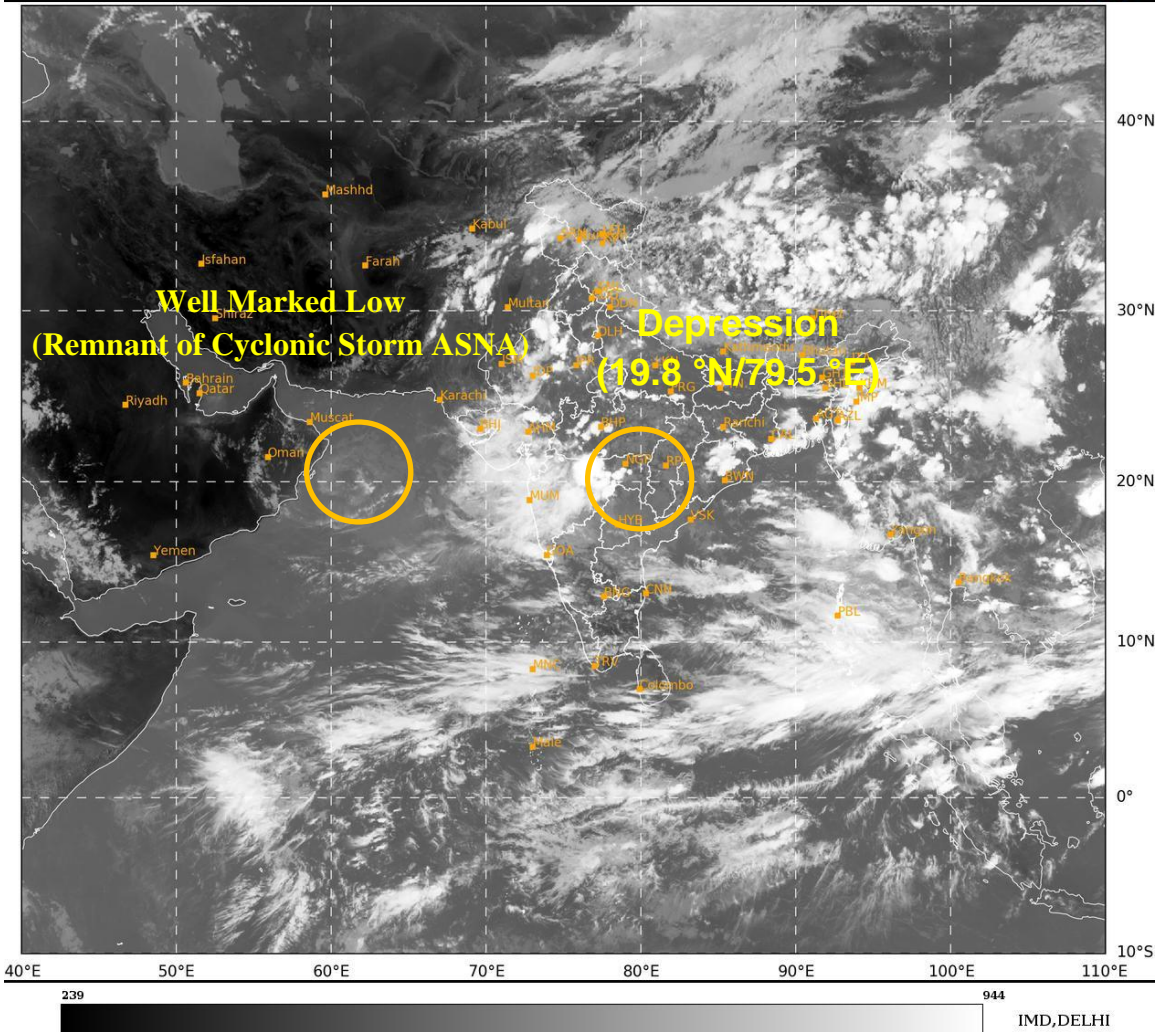
Next Press Release will be issued at 1330 hours IST of tomorrow, the 3rd September, 2024.

Contact: Cyclone Warning Division, Office of the Director General of Meteorology, India Meteorological Department, Ministry of Earth Sciences, E-mail: cyclonewarningdivision@gmail.com, Website: rsmcnewdelhi.imd.gov.in, Spatial rainfall distribution: Isolated: <25%, A few: 26-50%, Many: 51-75%, Most: 76-100%, Rainfall amount (mm): Heavy rain: 64.5 – 115.5, Very heavy rain: 115.6 – 204.4, Extremely heavy rain: 204.5 or more.

ANNEXURE – I

SAT : INSAT-3DR IMG
IMG_TIR1 10.8 um
LIC Mercator

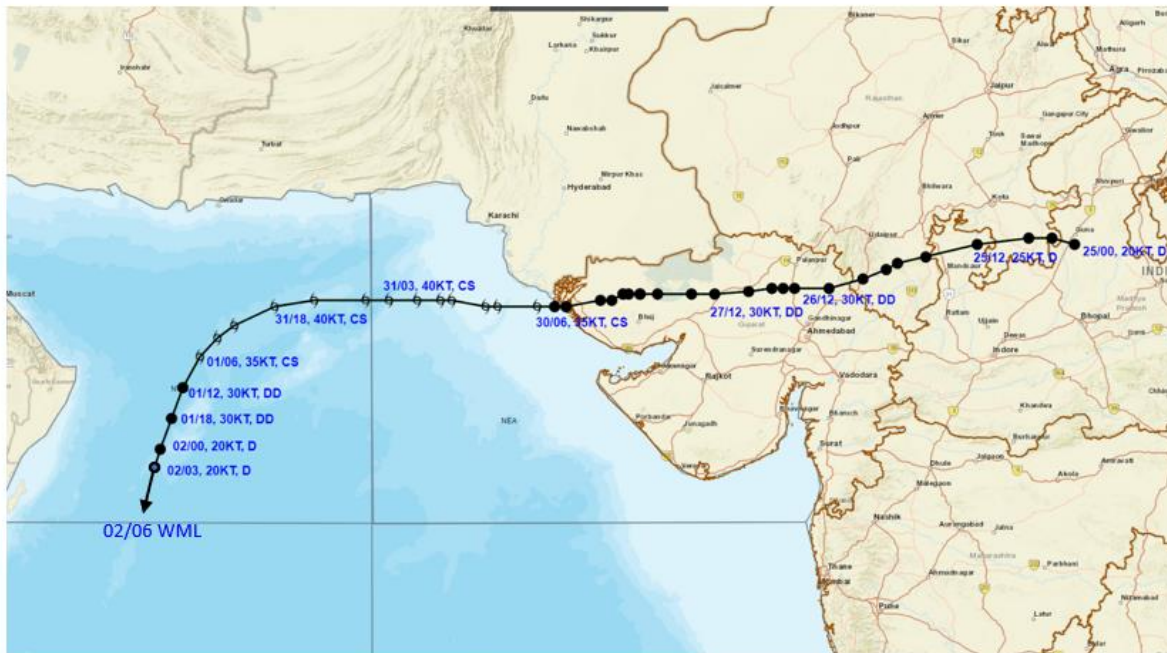
02-09-2024/(0845 to 0912) GMT
02-09-2024/(1415 to 1442) IST



Contact: Cyclone Warning Division, Office of the Director General of Meteorology, India
Meteorological Department, Ministry of Earth Sciences, E-mail: cyclonewarningdivision@gmail.com,
Website: rsmcnewdelhi.imd.gov.in, Spatial rainfall distribution: Isolated: <25%, A few: 26-50%, Many:
51-75%, Most: 76-100%, Rainfall amount (mm): Heavy rain: 64.5 – 115.5, Very heavy rain: 115.6 –
204.4, Extremely heavy rain: 204.5 or more.



OBSERVED TRACK OF CYCLONIC STORM ASNA OVER NORTH ARABIAN SEA DURING 25TH AUGUST-2ND SEPTEMBER, 2024.



DATE/TIME IN UTC
 IST=UTC + 0530
 L: LOW PRESSURE AREA
 WML: WELL MARKED LOW PRESSURE AREA
 D: DEPRESSION (17-27 KT)
 DD: DEEP DEPRESSION (28-33 KT)
 CS: CYCLONIC STORM (34-47 KT)
 SCS: SEVERE CYCLONIC STORM (48-63KT)
 VSCS: VERY SEVERE CYCLONIC STORM (64-89 KT)
 ESCS: EXTREMELY SEVERE CYCLONIC STORM (90-119 KT)
 SuCS: SUPER CYCLONIC STORM (\geq 120 KT)

● LESS THAN 34 KT
 ○ 34-47 KT
 ○ \geq 48 KT
 — OBSERVED TRACK
 — FORECAST TRACK
 ▲ CONE OF UNCERTAINTY

Contact: Cyclone Warning Division, Office of the Director General of Meteorology, India
 Meteorological Department, Ministry of Earth Sciences, E-mail: cyclonewarningdivision@gmail.com,
 Website: rsmcnewdelhi.imd.gov.in, Spatial rainfall distribution: Isolated: <25%, A few: 26-50%, Many:
 51-75%, Most: 76-100%, Rainfall amount (mm): Heavy rain: 64.5 – 115.5, Very heavy rain: 115.6 –
 204.4, Extremely heavy rain: 204.5 or more.



OBSERVED AND FORECAST TRACK OF DEPRESSION OVER EAST VIDARBHA AND ADJOINING TELANGANA BASED ON 0600 UTC (1130 IST) OF 2nd SEPTEMBER, 2024.

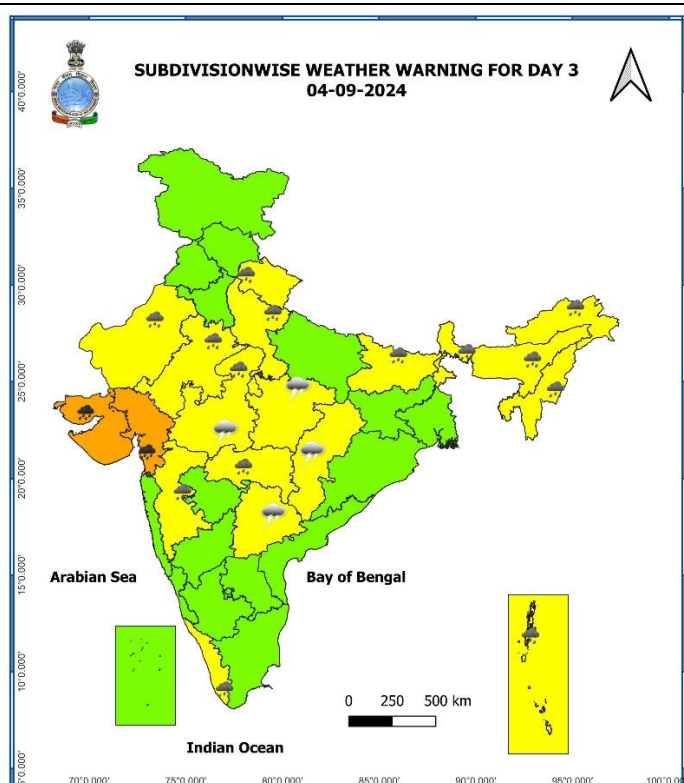
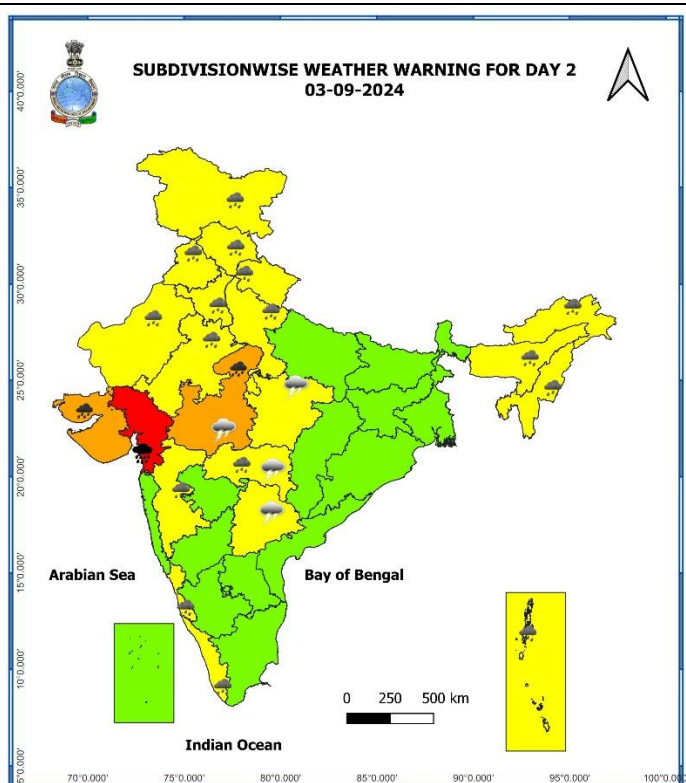
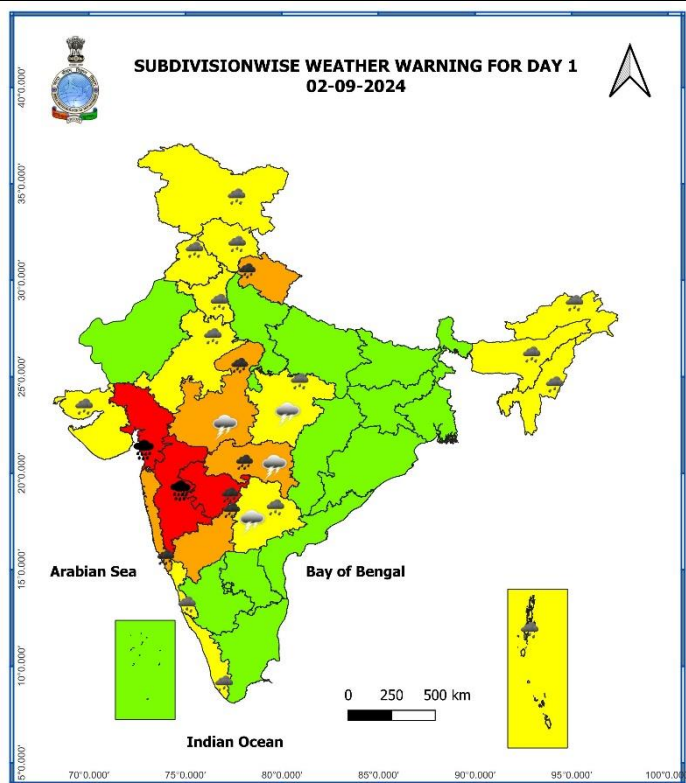


DATE/TIME IN UTC
 IST=UTC + 0530
 L: LOW PRESSURE AREA
 WML: WELL MARKED LOW PRESSURE AREA
 D: DEPRESSION (17-27 KT)
 DD: DEEP DEPRESSION (28-33 KT)
 CS: CYCLONIC STORM (34-47 KT)
 SCS: SEVERE CYCLONIC STORM (48-63KT)
 VSCS: VERY SEVERE CYCLONIC STORM (64-89 KT)
 ESCS: EXTREMELY SEVERE CYCLONIC STORM (90-119 KT)
 SuCS: SUPER CYCLONIC STORM (≥ 120 KT)

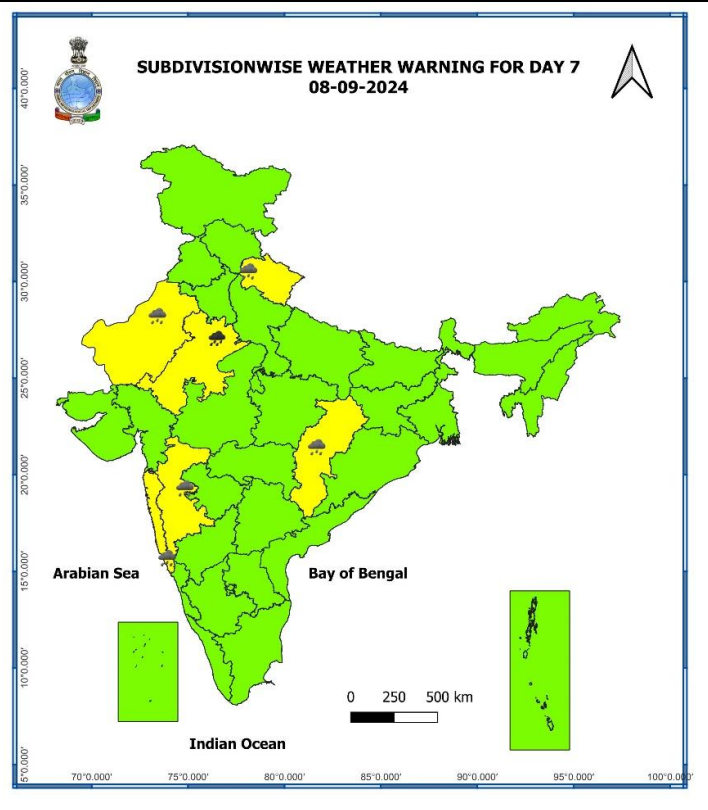
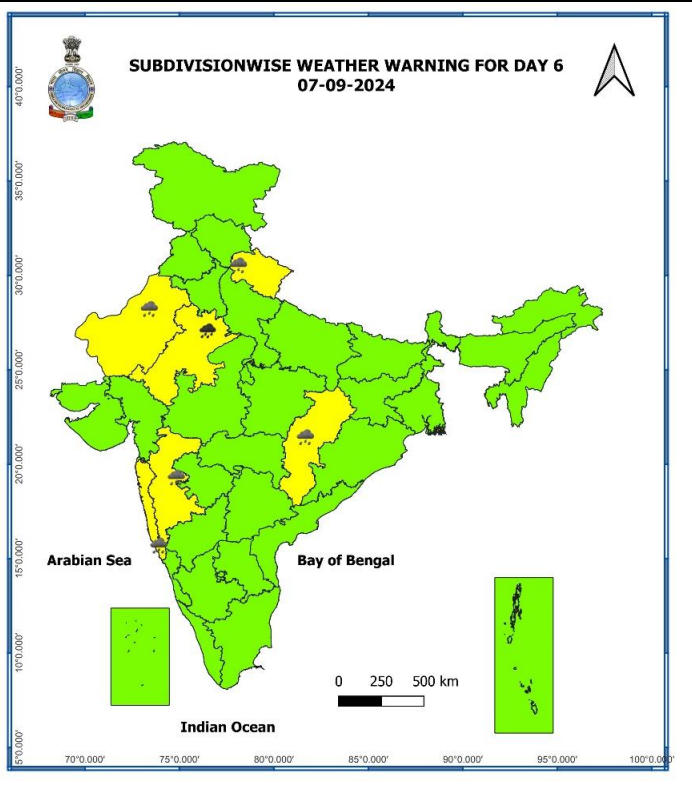
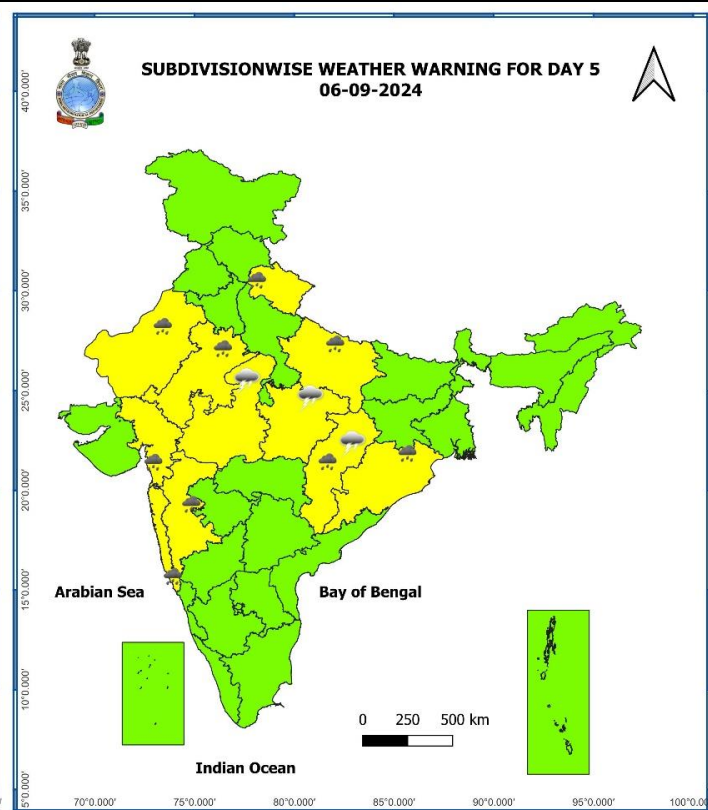
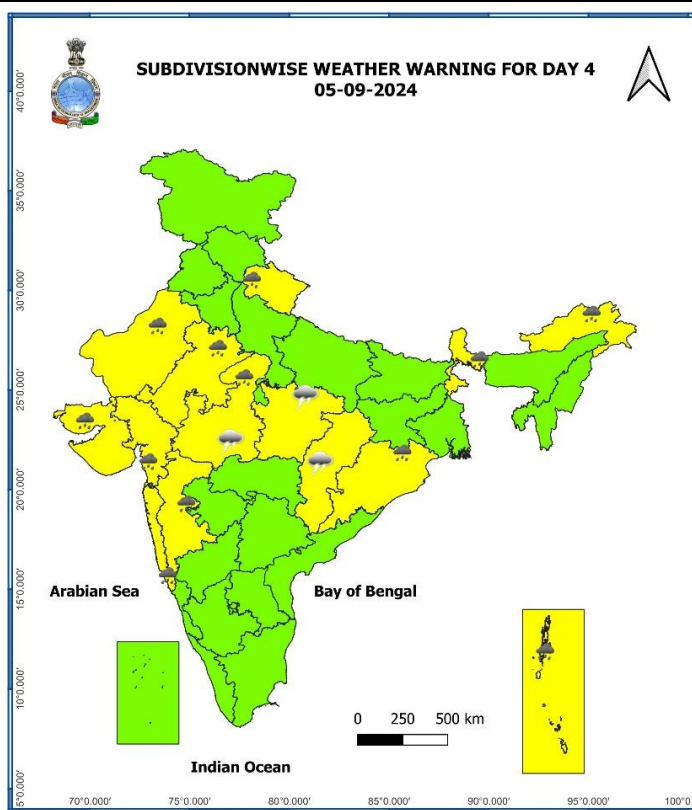
● LESS THAN 34 KT
 ○ 34-47 KT
 ○ ≥ 48 KT
 — OBSERVED TRACK
 — FORECAST TRACK
 ▲ CONE OF UNCERTAINTY

Contact: Cyclone Warning Division, Office of the Director General of Meteorology, India
 Meteorological Department, Ministry of Earth Sciences, E-mail: cyclonewarningdivision@gmail.com,
 Website: rsmcnewdelhi.imd.gov.in, Spatial rainfall distribution: Isolated: <25%, A few: 26-50%, Many:
 51-75%, Most: 76-100%, Rainfall amount (mm): Heavy rain: 64.5 – 115.5, Very heavy rain: 115.6 –
 204.4, Extremely heavy rain: 204.5 or more.

Weather Warning Graphics



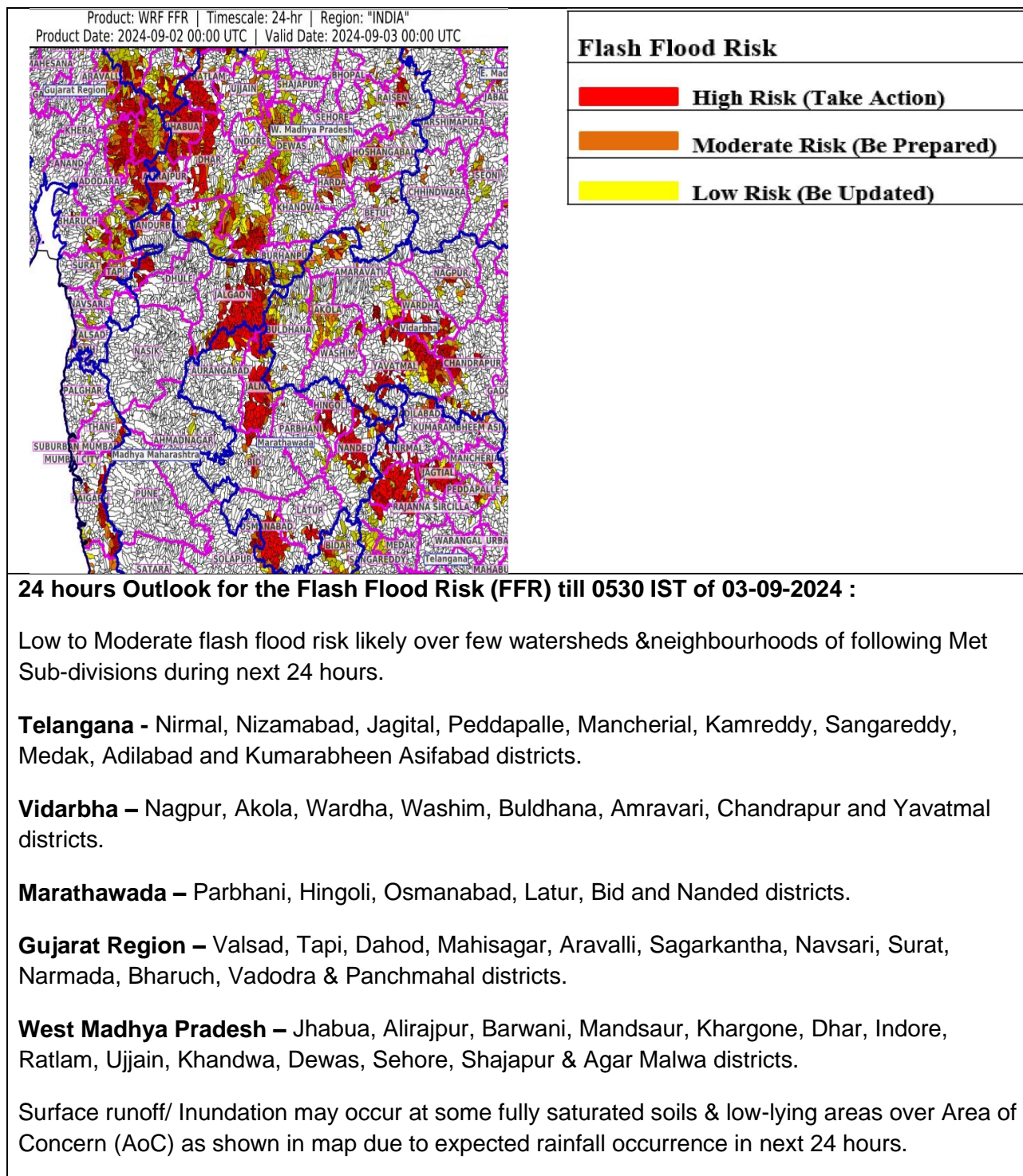
Contact: Cyclone Warning Division, Office of the Director General of Meteorology, India Meteorological Department, Ministry of Earth Sciences, E-mail: cyclonewarningdivision@gmail.com, Website: rsmcnewdelhi.imd.gov.in, Spatial rainfall distribution: Isolated: <25%, A few: 26-50%, Many: 51-75%, Most: 76-100%, Rainfall amount (mm): Heavy rain: 64.5 – 115.5, Very heavy rain: 115.6 – 204.4, Extremely heavy rain: 204.5 or more.



- Action may be taken based on **ORANGE AND RED** COLOUR warnings.
- Vulnerable regions likely urban and hilly areas action may be initiated for heavy rainfall warning.
- As the lead period increases forecast accuracy decreases.

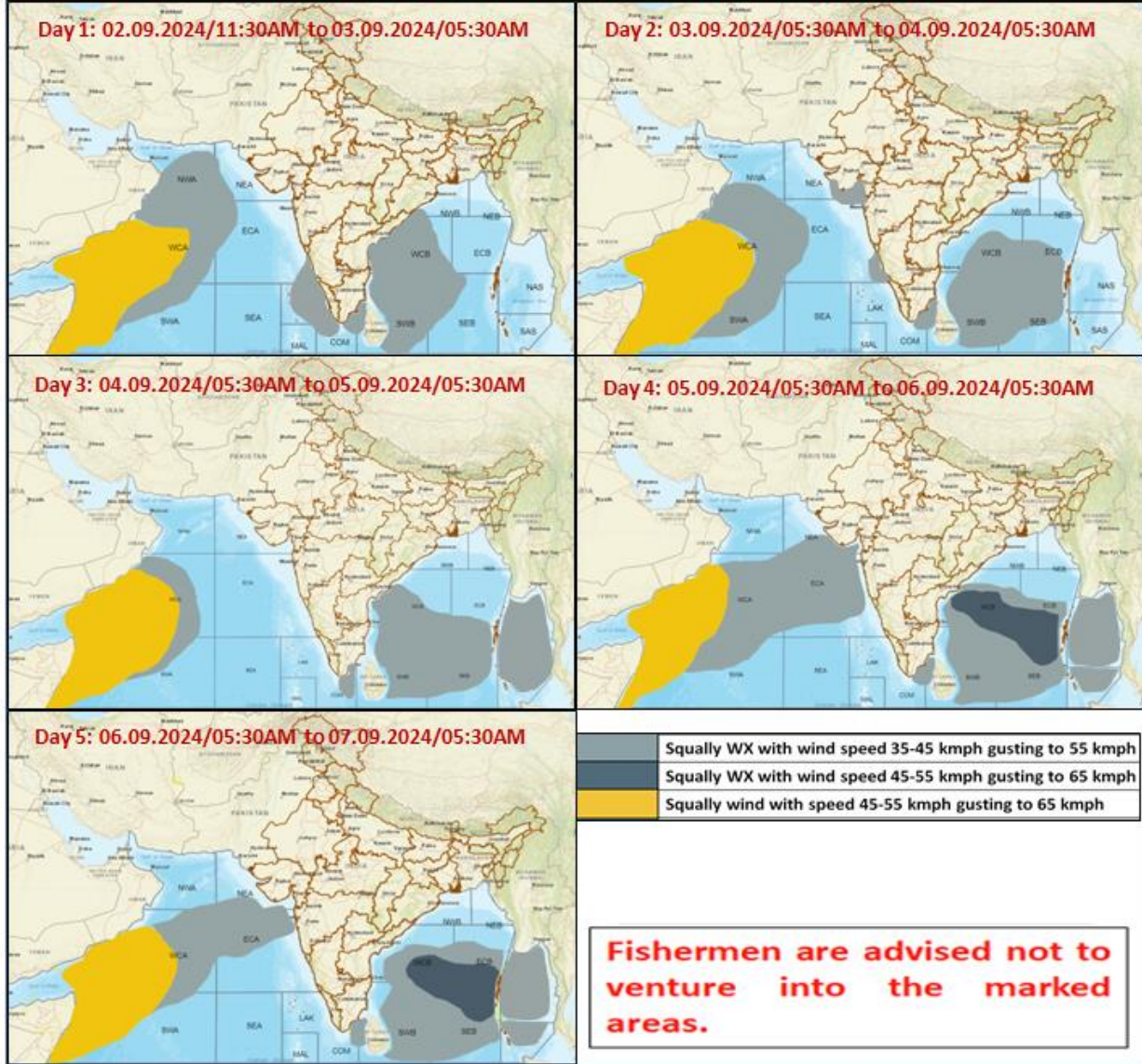
Contact: Cyclone Warning Division, Office of the Director General of Meteorology, India Meteorological Department, Ministry of Earth Sciences, E-mail: cyclonewarningdivision@gmail.com, Website: rsmcnewdelhi.imd.gov.in, Spatial rainfall distribution: Isolated: <25%, A few: 26-50%, Many: 51-75%, Most: 76-100%, Rainfall amount (mm): Heavy rain: 64.5 – 115.5, Very heavy rain: 115.6 – 204.4, Extremely heavy rain: 204.5 or more.

FLASH FLOOD GUIDANCE



Contact: Cyclone Warning Division, Office of the Director General of Meteorology, India
Meteorological Department, Ministry of Earth Sciences, E-mail: cyclonewarningdivision@gmail.com,
Website: rsmcnewdelhi.imd.gov.in, Spatial rainfall distribution: Isolated: <25%, A few: 26-50%, Many: 51-75%, Most: 76-100%, Rainfall amount (mm): Heavy rain: 64.5 – 115.5, Very heavy rain: 115.6 – 204.4, Extremely heavy rain: 204.5 or more.

Fishermen Warning Graphics



Contact: Cyclone Warning Division, Office of the Director General of Meteorology, India Meteorological Department, Ministry of Earth Sciences, E-mail: cyclonewarningdivision@gmail.com, Website: rsmcnewdelhi.imd.gov.in, Spatial rainfall distribution: Isolated: <25%, A few: 26-50%, Many: 51-75%, Most: 76-100%, Rainfall amount (mm): Heavy rain: 64.5 – 115.5, Very heavy rain: 115.6 – 204.4, Extremely heavy rain: 204.5 or more.

Significant amount of rainfall recorded from 0830 hours IST of yesterday, 1st September to 0830 hours IST of today, the 02nd September, 2024 (cm):

Marathwada: Manvat (Parbhani) 31, Dhalegaon - Fmo (Parbhani) 26, Mantha (Jalna) 23, Pathri (Parbhani) 23, Partur (Jalna) 22, Sonpeth (Parbhani) 20, Selu (Parbhani) 19, Ardhapur (Nanded) 19, Udgir (Latur) 16, Ambad (Jalna) 15, Nanded - Imd Parttime (Nanded) 14, Jintur (Parbhani) 13, Ghansawangi (Jalna) 13, Deoni (Latur) 13, Parbhani - Imd Obsy (Parbhani) 13, Ambejogai / Mominabad (Beed) 13, Georai (Beed) 12, Udgir - Imd Parttime (Latur) 12, Dharur (Beed) 12, Palam (Parbhani) 12, Hingoli - Hydromet (Hingoli) 11, Aundha Nagnath (Hingoli) 11, Sillod (Chh. Sambhajinagar) 11, Bhokardan (Jalna) 11, Wadawani (Beed) 10, Jalkot (Latur) 10, Kandhar (Nanded) 10, Purna (Parbhani) 10, Gangakhed (Parbhani) 9, Mudkhed (Nanded) 9, Latur (Latur) 9, Bhokar (Nanded) 9, Hadgaon (Nanded) 9, Vasmat (Hingoli) 9, Ahmedpur (Latur) 9, Washi (Dharashiv) 9, Phulambri (Chh. Sambhajinagar) 8, Badnapur (Jalna) 8, Kallamnuri (Hingoli) 8, Renapur (Latur) 8, Kaij (Beed) 8, Beed (Beed) 7, Dharmabad (Nanded) 7, Chakur (Latur) 7, Parli Vaijnath (Beed) 7, Kallamb (Dharashiv) 7, Sambhajinagar-imd Obsy (Chh. Sambhajinagar) 7, Mukhed (Nanded) 7, Mahur (Nanded) 7, Shirur Anantpal (Latur) 7, Bhum (Dharashiv) 7, Manjlegaon (Beed) 7, Paithan (Chh. Sambhajinagar) 7, Loha (Nanded) 7, Naigaon Khairgaon (Nanded) 7, Patoda (Beed) 7,

Telangana: Sadasivanagar (Kamareddy) 24, Tadwai (Kamareddy) 24, Lingampet (Kamareddy) 23, Kamareddy (Kamareddy) 22, Jainoor (Kumaram Bheem) 19, Papannapet (Medak) 17, Utnur (Adilabad) 17, Gandhari (Kamareddy) 17, Mirdoddi (Siddipet) 15, Yellareddy (Kamareddy) 15, Naga Reddipet (Kamareddy) 15, Gambhiraopet (Rajanna Sircilla) 15, Khanpur (Nirmal) 14, Laxmanchanda (Nirmal) 13, Dubbak (Siddipet) 13, Balkonda (Nizamabad) 12, Tekmal (Medak) 12, Metpalle (Jagtial) 12, Nirmal (Nirmal) 12, Yellareddypeta (Rajanna Sircilla) 12, Kondapak (Siddipet) 12, Mallapur (Jagtial) 12, Alladurg (Medak) 12, Dandepalle (Mancherial) 12, Kampasagar(a) (Nalgonda) 11, Sarangapur (Jagtial) 11, Bhiknur (Kamareddy) 11, Bejjanki (Siddipet) 11, Mortad (Nizamabad) 11, Banswada (Kamareddy) 11, Navipet (Nizamabad) 11, Domakonda (Kamareddy) 10, Peddapalle (Peddapalle) 10, Nanganur (Siddipet) 10, Medak (Medak) 10, Elagaid (Peddapalle) 10, Sangem (Warangal) 10, Husnabad(arg) (Siddipet) 10, Dilawarpur (Nirmal) 10, Belampalle (Mancherial) 10, Jangaon (Jangaon) 10,

West Madhya Pradesh: Bhagwanpura (Khargone) 13, Bhikangaon (Khargone) 13, Khargone-aws (Khargone) 10, Gogawan (Khargone) 9, New Harsud (Khandwa) 9, Khandwa (Khandwa) 7, Dabra (Gwalior) 7,

East Rajasthan: Jaipur Aero (Jaipur) 12, Nasirabad (Ajmer) 11, Sanganer Tehsil Sr (Jaipur) 9, Thanagazi (Alwar) 8, Bassi (Jaipur) 8, Srimadhapur (Sikar) 7, Vijaynagar Sr (Ajmer) 7,

Gujarat Region: Waghai (Dangs) 11, Bodeli (Chhota Udepur) 7,

Madhya Maharashtra: Pathardi (Ahmednagar) 9,

West Rajasthan: Nawa (Nagaur) 7,

Vidarbha: Pusad (Yeotmal) 10, Digras (Yeotmal) 7,

Contact: Cyclone Warning Division, Office of the Director General of Meteorology, India
Meteorological Department, Ministry of Earth Sciences, E-mail: cyclonewarningdivision@gmail.com,
Website: rsmcnewdelhi.imd.gov.in, **Spatial rainfall distribution:** Isolated: <25%, A few: 26-50%, Many: 51-75%, Most: 76-100%, **Rainfall amount (mm):** Heavy rain: 64.5 – 115.5, Very heavy rain: 115.6 – 204.4, Extremely heavy rain: 204.5 or more.